

*Lancaster County Conservation District's*

*Watershed Excellence Award*

**Chiques Creek**

**Watershed Alliance**



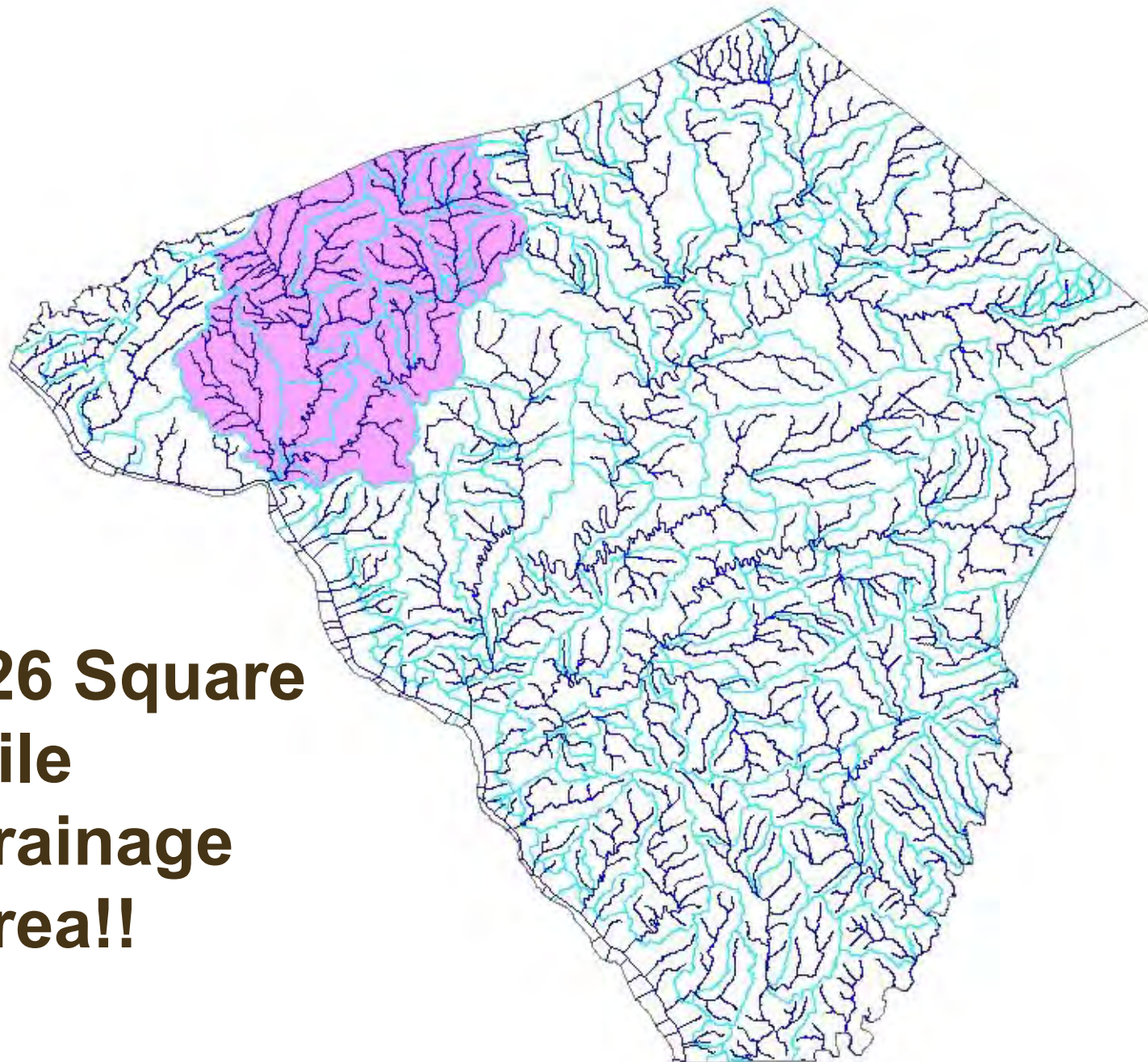


# Chiques Creek Watershed Alliance History

- Formed in 2000 by local community leaders.
- Their focus was to improve the overall water quality in the watershed & to educate residents on watershed stewardship activities.
- One of the first issues they found out was that to do this throughout the entire Chiques Creek Watershed drainage area would be a monumental task.

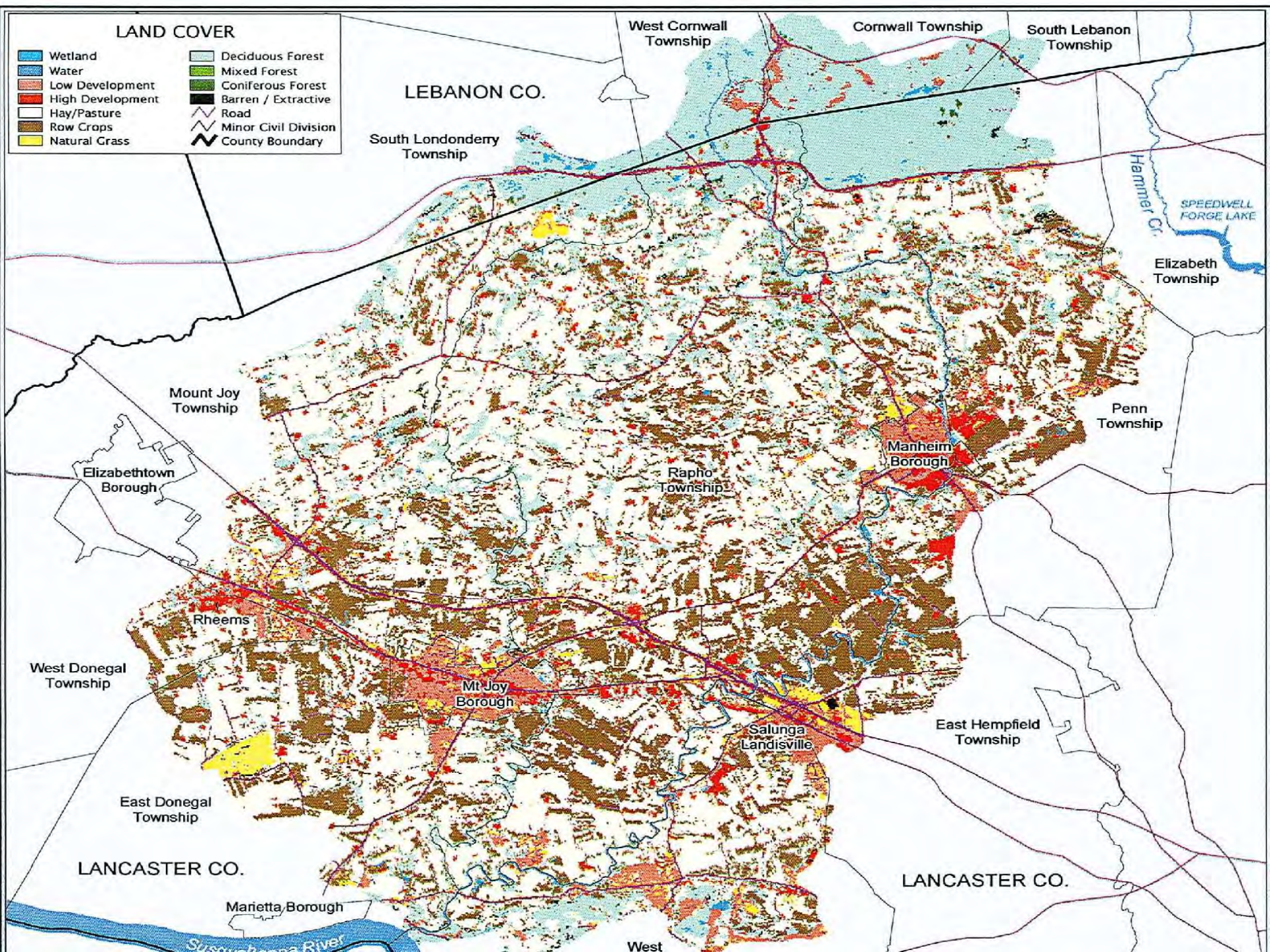


**126 Square  
Mile  
Drainage  
Area!!**



# LAND COVER

- |                  |                      |
|------------------|----------------------|
| Wetland          | Deciduous Forest     |
| Water            | Mixed Forest         |
| Low Development  | Coniferous Forest    |
| High Development | Barren / Extractive  |
| Hay/Pasture      | Road                 |
| Row Crops        | Minor Civil Division |
| Natural Grass    | County Boundary      |



# WATERSHEDS

**Little Chiques  
Creek Watershed  
Association**

**Donegal Fish &  
Conservation  
Association**

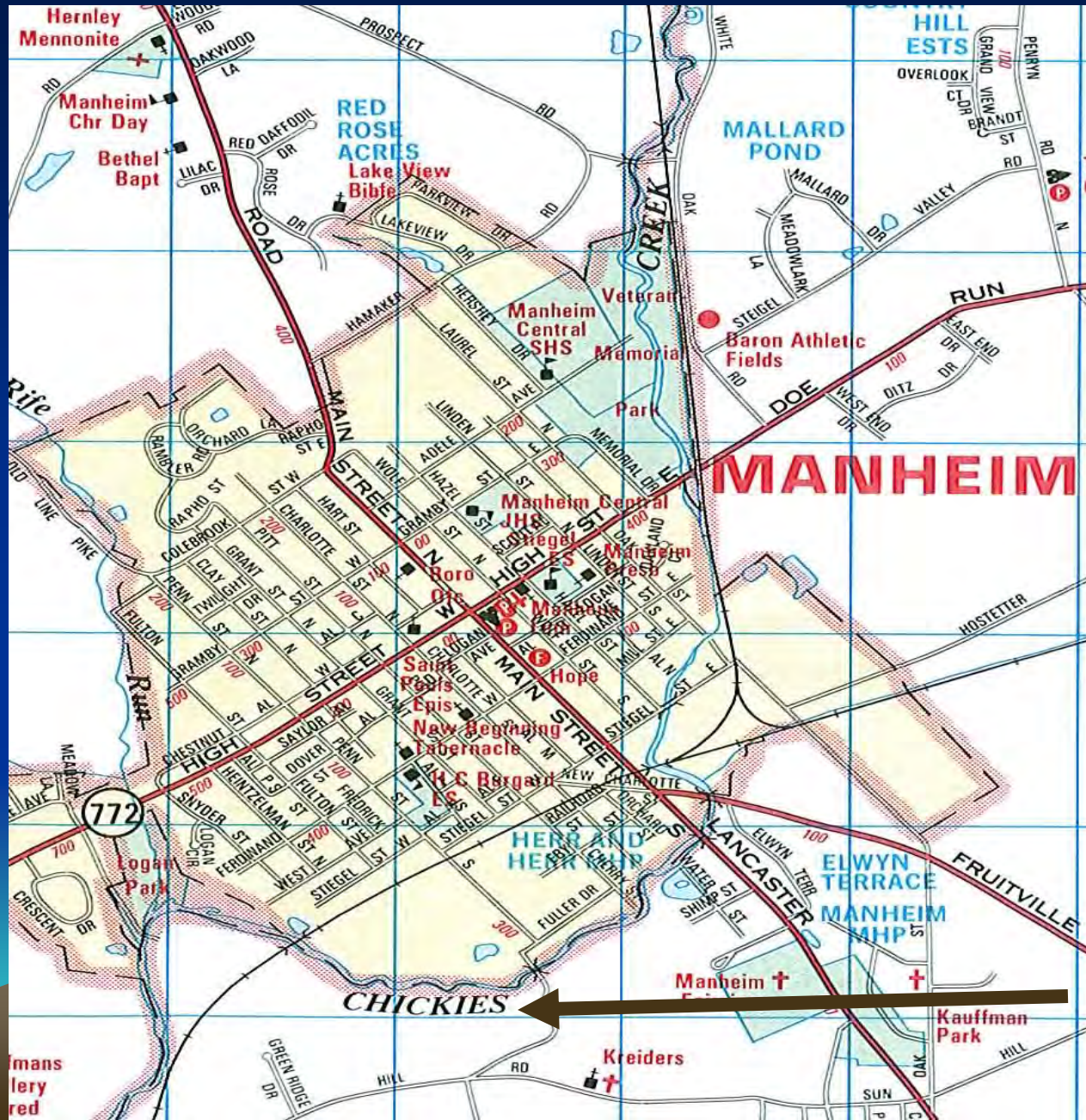


**Manheim**

2 0 2 Miles

1:330,000

# What's In A Name?



# Big Chiquesalunga Creek

B.M. Stauffer  
G. & S. Mill  
G. Mill

Big Chiquesalunga Creek

BOROUGH OF

MANHEIM

Scale 600 F<sup>t</sup> to 1 Inch.

J<sup>d</sup> Nevling's Store

Sch<sup>d</sup> Ho.

S. Mill

J<sup>m</sup> Hostetter's  
Coal Yard

Nathan  
Worley  
Store &  
Lumber Yd

Freight Depot

J<sup>m</sup> Reist

J<sup>d</sup> Reist

Benj<sup>m</sup> Eby

Engine Ho.

READING

COLUMBIA

R. R.

LANCASTER & MANHEIM TURNPIKE

OLD LANCASTER ROAD

FERDINAND

STREET

HAZLENT

ALLEY

PLUM

ALLEY

RT. 101

STREET

CHESTNUT

TENN

ALLEY

# What Does Chiquesalunga Mean?



# Chiques Creek Watershed Alliance

## History (con't)

- In 2001 the Alliance teamed up with Manheim Borough, Rapho Township, the Manheim Soccer Club, & a local Eagle Scout to remove invasive plant species from a Borough Park, Logan Park.







# Chiques Creek Watershed Alliance

## History (con't)

- Next they wanted to created a comprehensive Watershed Assessment of the Chiques Cr. Watershed.
- They wanted to know what was in the watershed they could highlight, what areas needed some work, & what would be a next step to showcase the Alliance's mission.



# CHIQUES CREEK WATERSHED ASSESSMENT

## CHANNEL STABILITY ASSESSMENT AND STREAM RESTORATION PRIORITIZATION



Funded by:



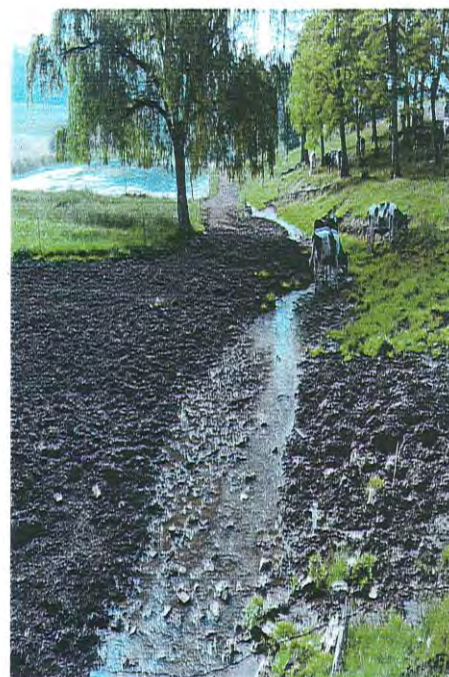
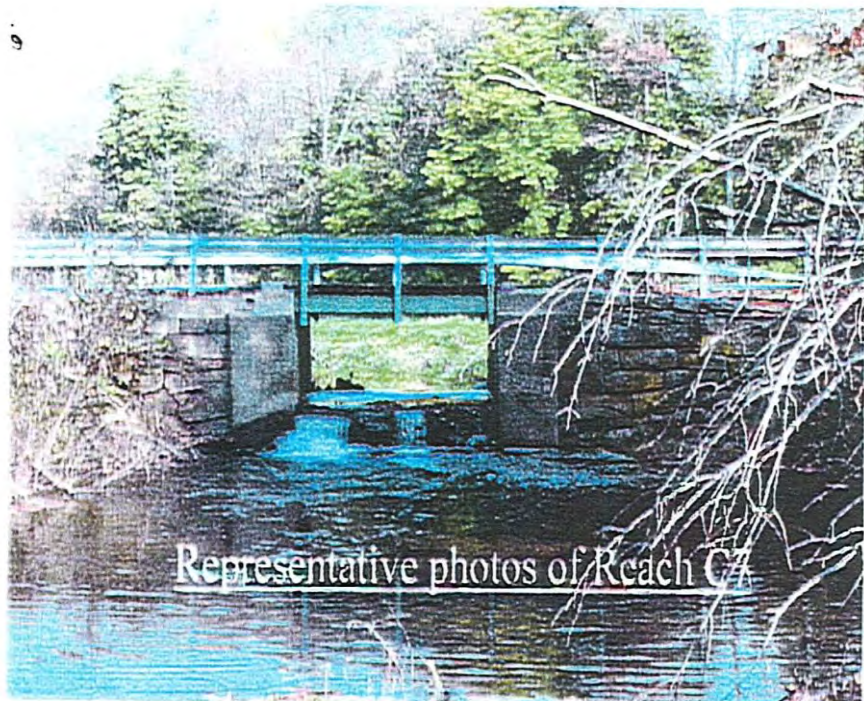
Prepared for:

**Chiques Creek  
Watershed Association**

Prepared by:



*July 2002*



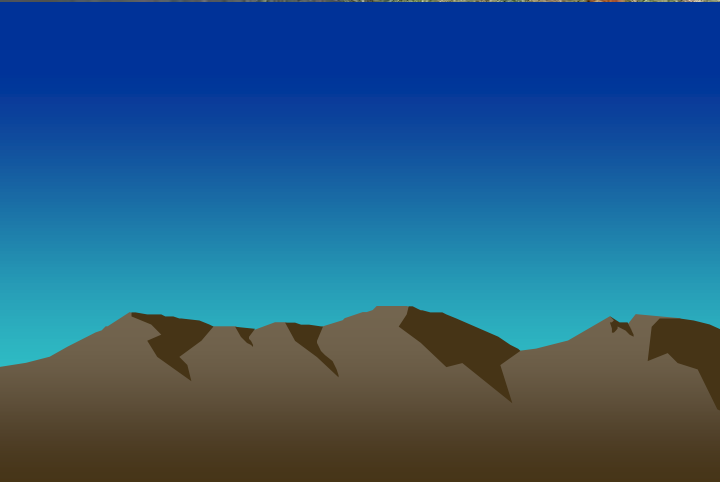
# Chiques Creek Watershed Alliance History (con't)

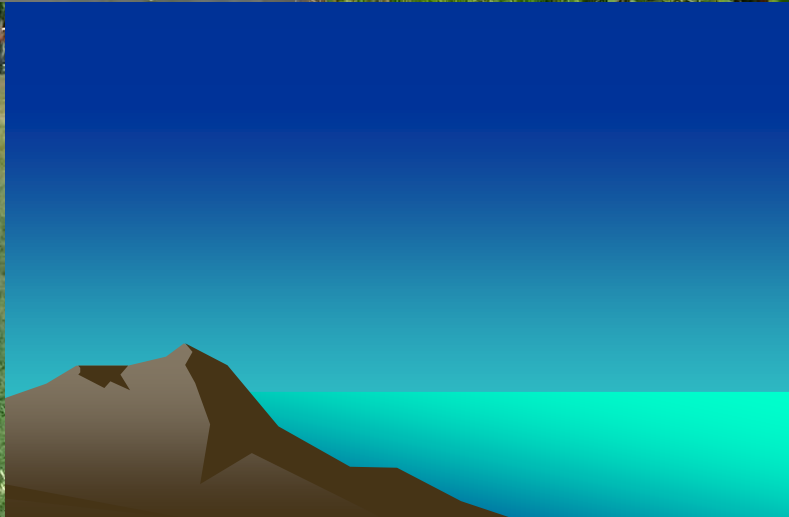
- In 2003 the Chiques Creek Watershed Alliance started their first stream project, The Mummau Park Project.













**Before**



**After**



# Chiques Creek Watershed Alliance

## History (con't)

- In recent years the group has been working with the Alliance for Aquatic Resource Monitoring (ALLARM) to setup a watershed-wide stream monitoring program.
- The Watershed Alliance has been awarded several grants to purchase monitoring equipment, acquire training from professionals, & promote their monitoring efforts.

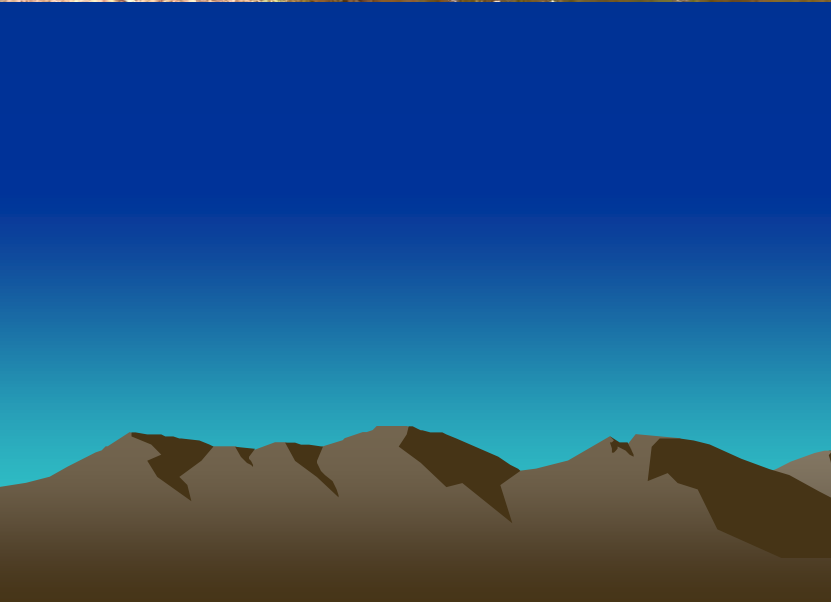


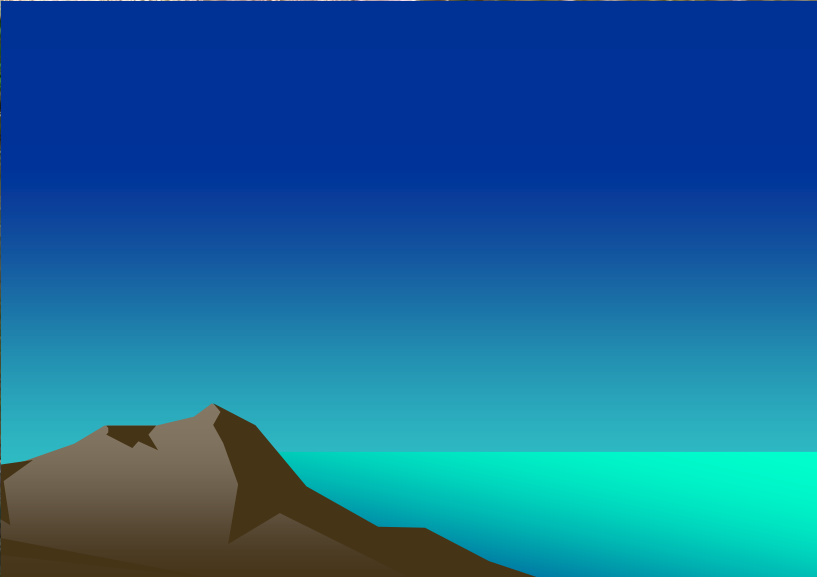


# Chiques Creek Watershed Alliance History (con't)

- Additional projects in the watershed have also benefited from the Alliance's presence.
- One example is the Shearers Creek Project







# Additional Chiques Creek Watershed Alliance Facts

- Working relationship with Manheim Central School District – Wetland Day & Native Plant Nursery
- Annual Display at the Manheim Farm Show
- “Geology Trek”
- Mummau Park Educational Initiative
- Greentree Redevelopment Project
- Mummau Park Recreational Trail System



# Chiques Creek Watershed Alliance Lancaster County Conservation District's Watershed Excellent Award

