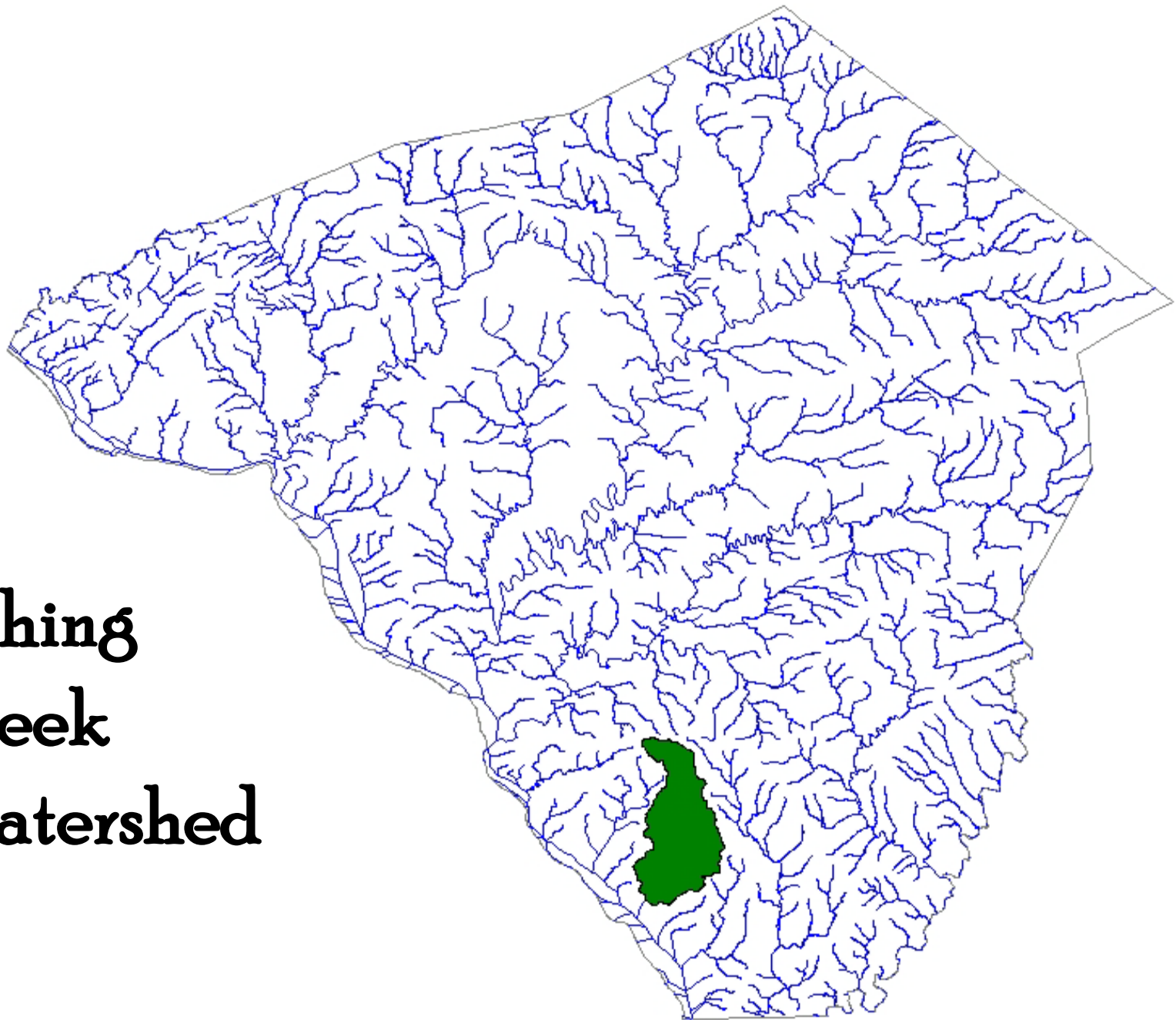


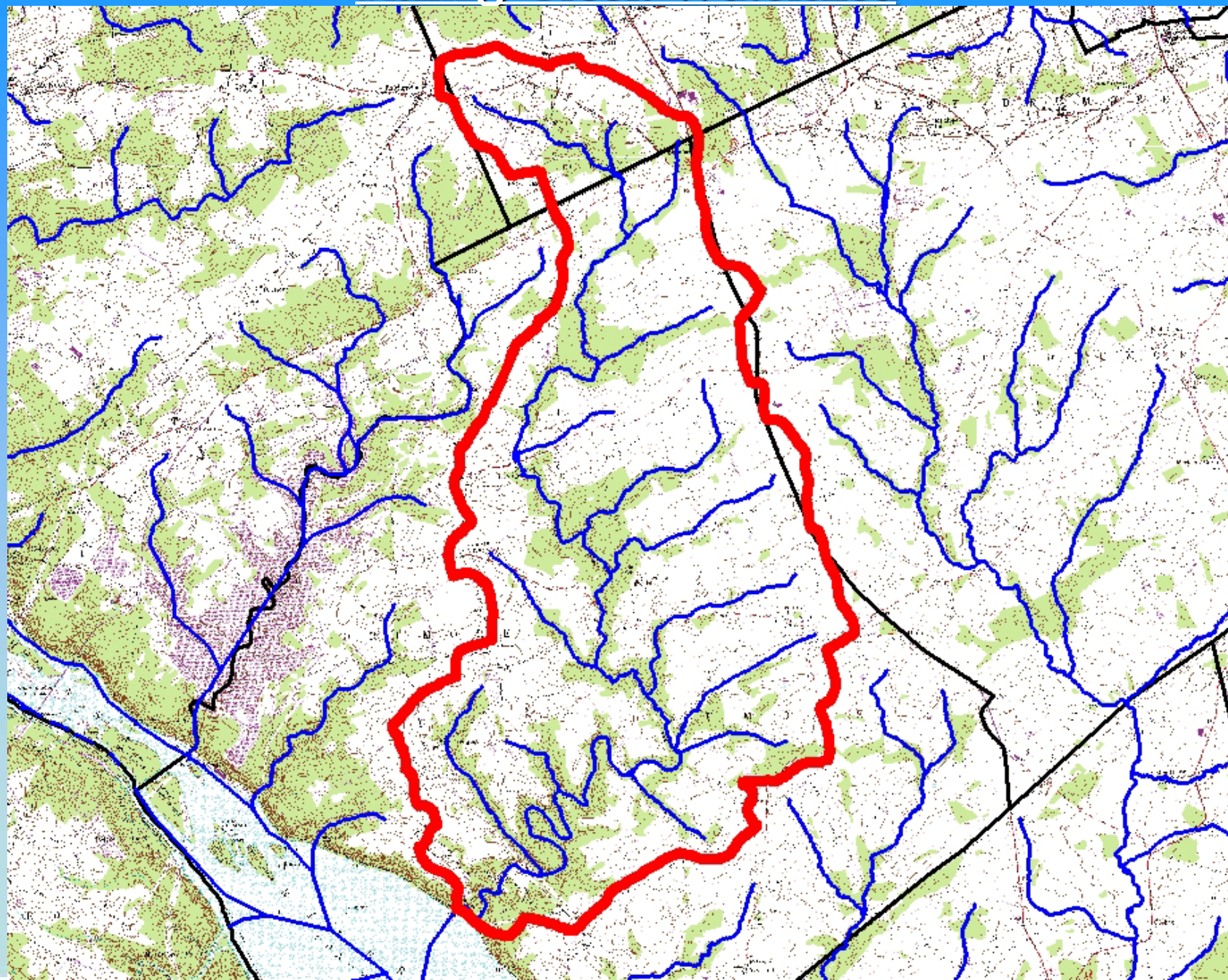
*Lancaster County Conservation District's
Watershed Excellence Award*

**Friends of Fishing Creek
Watershed Association**

**Fishing
Creek
Watershed**



Fishing Creek Watershed



Fishing Creek Watershed Facts

- **14.2 square mile drainage area**
- **Designated as a High Quality Coldwater Fishery**
(candidate stream for Exceptional Value status)
- **Along with a wild reproducing brown trout population Fishing Cr. also sustains;**
 - **26 species of mammals**
 - **147 species of birds**
 - **34 species of reptiles/amphibians**
 - **At least 26 species of fish**

***The watershed & adjacent areas also support 8 plant & 2 animal species listed as threatened, endangered, or rare species in Pennsylvania**







Photos courtesy Rettew Associates



Photo courtesy Rettew Associates



3 30 '05



Photo courtesy Rettew Associates



Photo courtesy Rettew Associates





FRIENDS OF FISHING CREEK

Friends of Fishing Creek Watershed Association Evolution

- 2002-Lancaster County Conservancy expresses interest in creating a Watershed Plan for its Fishing Creek preserve & the Fishing Creek Watershed area.
- 2004-Lancaster County Conservancy is awarded a Department of Conservation & Natural Resource Rivers Conservation Plan grant to create a Fishing Creek Watershed Plan.
- 2005-Rettew Associates is hired to create the Fishing Creek Watershed Plan with assistance from local stakeholders
- March 2006-The Fishing Creek Watershed Plan is complete & unveiled to the public.

Friends of Fishing Creek Watershed Association Evolution (con't)

- April 2006-The Lancaster County Conservancy gathers interested landowners for the first “Fishing Creek Watershed Association” mtg.
- 2006-2007-The Friends of Fishing Creek Watershed Association takes form with Board members and officers elected, volunteers gathered, membership dues created, potential activities lined up, press releases created, and official nonprofit status obtained.
- August 2007-Friends of Fishing Creek Watershed Association conduct their first project.





PARK

FRIENDS OF FISHING CREEK

Photo courtesy Jan Hartle





Photo courtesy Jan Hartle







Photo courtesy Jan Hartle











Photo courtesy Jan Hartle





Photo courtesy Jan Hartle











Photo courtesy Jan Hartle



Photo courtesy Jan Hartle

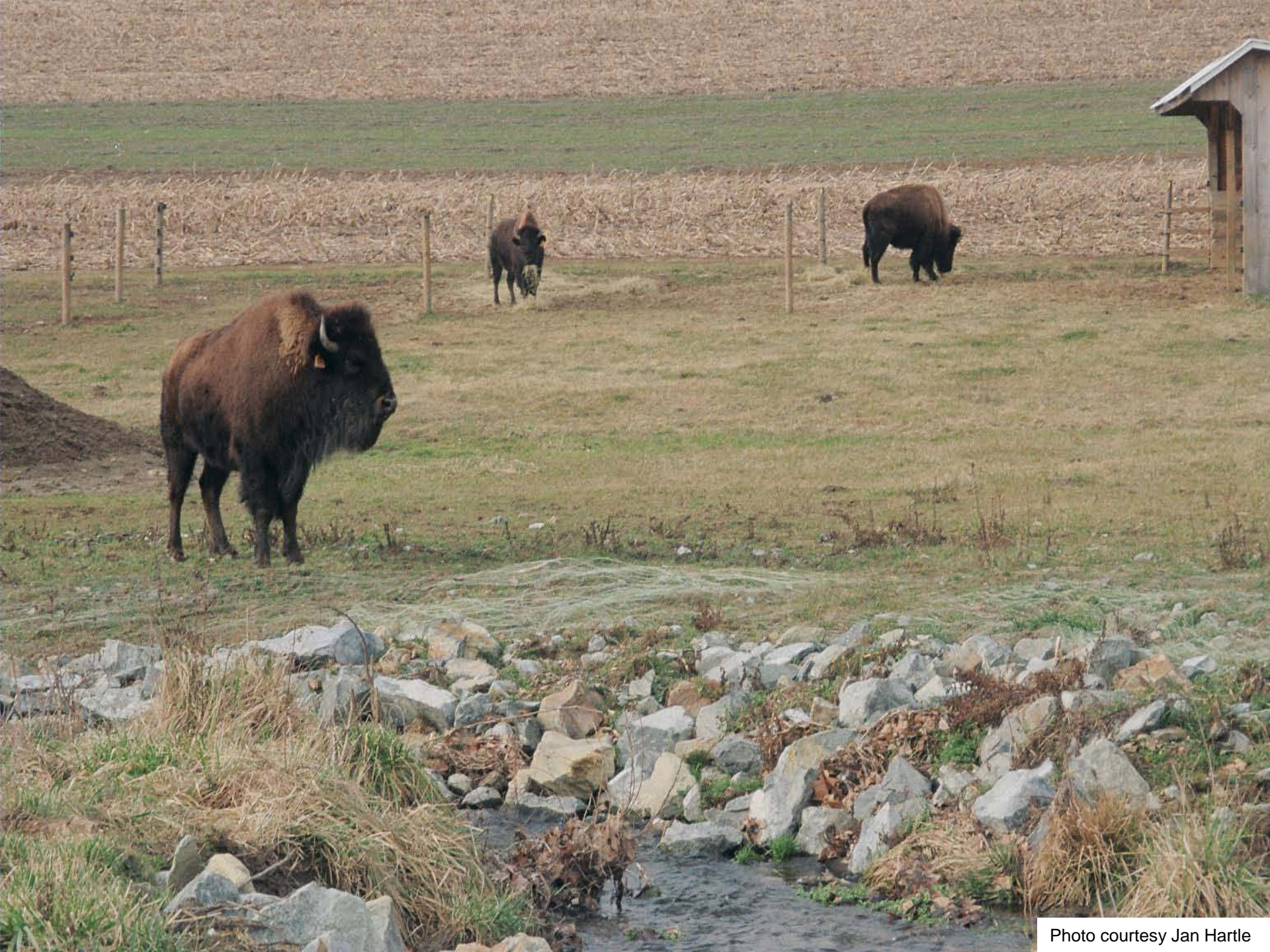


Photo courtesy Jan Hartle



Photo courtesy Jan Hartle



Photo courtesy Jan Hartle









Photo courtesy Jan Hartle



Photo courtesy Jan Hartle



Photo courtesy Jan Hartle

*Friends of Fishing Creek
Watershed Association
Educational Activities*



Photo courtesy Roxanne Todd



Photo courtesy Roxanne Todd



Photo courtesy Roxanne Todd



Photo courtesy Roxanne Todd



Photo courtesy Roxanne Todd



Photo courtesy Roxanne Todd







er to amaze you

self.®

OCTORARO WATERSHED ASSOCIATION

Dedicated To Protecting Our Natural Resources



WATER QUIZ



WATER QUIZ

Instead of going green, why not...
* GO BLUE *

G - Gift your children and grandchildren good clean water.

O - Octoraro Watershed Association is a Fishing Creek Watershed Association. What is the watershed to which you belong?

B - Because a watershed takes a boundary height and location, it has no boundaries. A large portion and part of the watershed flow from there what is likely you to protect your drinking water.

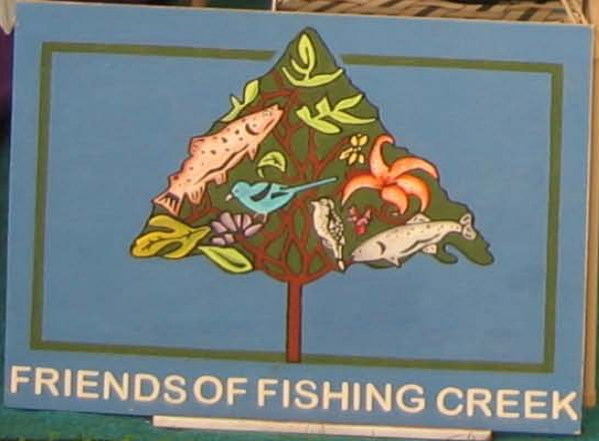
L - Land a head, the land is a watershed (soil); the land underneath is called alluvium, sand, silt, gravel, and other materials. The land is a watershed. It is the land that makes the difference. It is the land that makes the difference. It is the land that makes the difference. It is the land that makes the difference.

U - Urban land management practices (ULMP) on the farm, in the town and watershed, such as ground water, surface water, and air quality, and a primary function of the watershed.

E - Enter the watershed.

ENTERING OCTORARO WATERSHED

Watershed Association





Friends of
Fishing Creek

Photo courtesy Sallie Gregory



DO NOT
PILE UP
MANURE
PILED
AROUND





Friends of Fishing Cr. Watershed Association
Lancaster County Conservation District's
Watershed Excellence Award 2010

