

Our Neighbors Downstream

Goals and Progress within the
Chesapeake Bay Watershed

Fast Facts

- The nation's largest estuary
- Supports more than 3,600 species of plants, fish and animals
- Bay area = 7,000 square miles, and includes parts of six states
- Average depth = 21ft
- Watershed area = 64,000sq. Miles
- More than 15 million people live in its basin
- More than 100,000 streams and rivers drain into the Bay

The C2K Agreement

“The Renewed Bay Agreement”

- Political agreement between Maryland, PA, Virginia, DC, the EPA and the Chesapeake Bay Commission.
- Most holistic approach to cleaning up the bay in history
- Political entities agreed to 100 specific actions under 5 major categories.
- Efforts were science based

C2K Categories

- Living Resource Protection and Restoration
- Vital Habitat Protection and Restoration
- Water Quality Protection and Restoration
- Sound Land Use
- Stewardship and Community Engagement

Cost of a Clean Bay

Bay-wide Cost of A Clean Bay

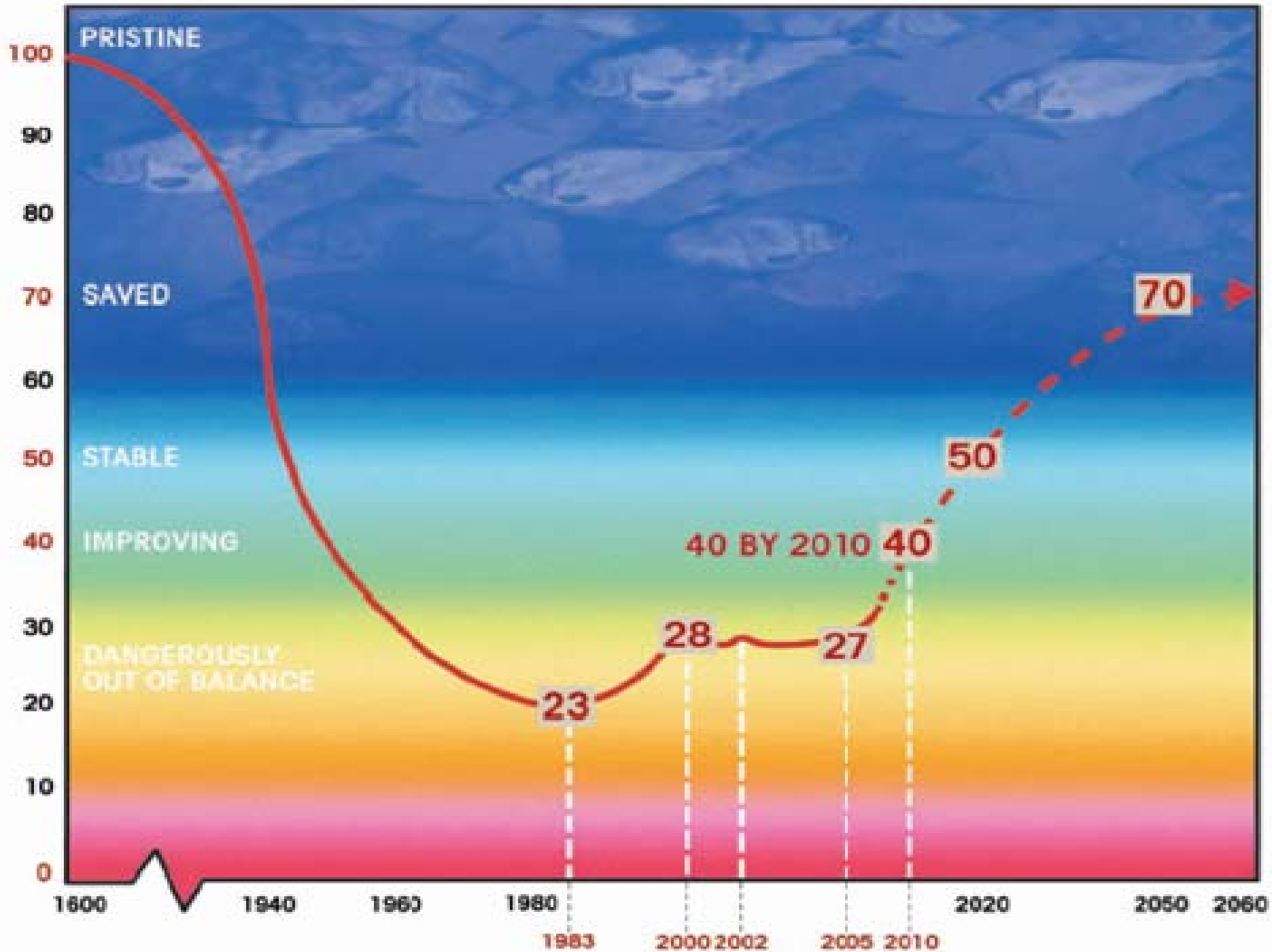
Total Projected Cost \$18.7 billion

Total Projected Income \$ 5.9 billion

Unfunded Gap \$12.8 billion


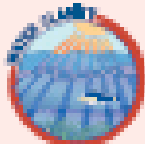




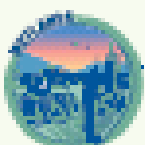
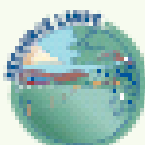
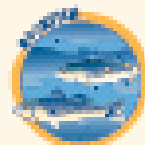


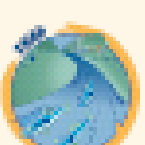
Progress

- CBF independently scored the health of the Bay.
- Looked at similar interest areas covered in the C2K.
- CBF found the Bay's health did not improve in 2005.



Report Card

State of the Bay in 2005

	POLLUTION		HABITAT		FISHERIES	
POLLUTION		F/D ↑↑ H Score=13 P Score=20		F ↔ Score=18		
		F ↓ Score=12		D ↔ Score=27		
HABITAT		B+ ↔ Score=55		D- ↑ Score=20		
		C+ ↔ Score=42		D ↔ Score=29		
FISHERIES		A+ ↓ Score=71		F ↑ Score=3		
		C ↔ Score=38		F ↑ Score=12		

27

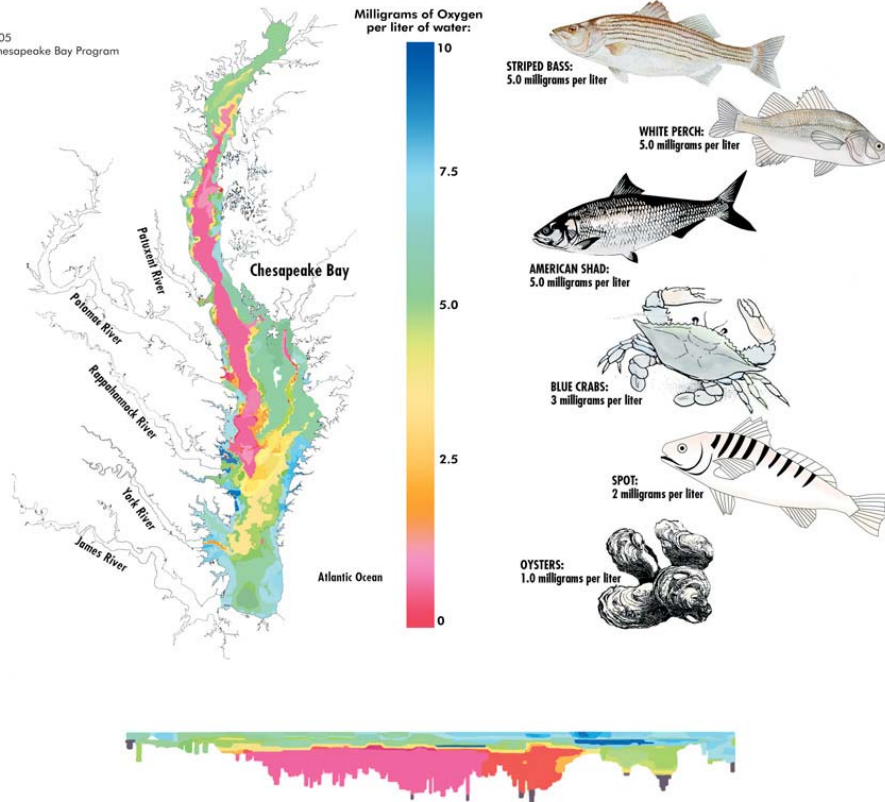
A EXCELLENT
B GOOD
C FAIR
D POOR
F CRITICAL

Dissolved Oxygen Levels

CHESAPEAKE BAY DEAD ZONE

AUGUST 2005

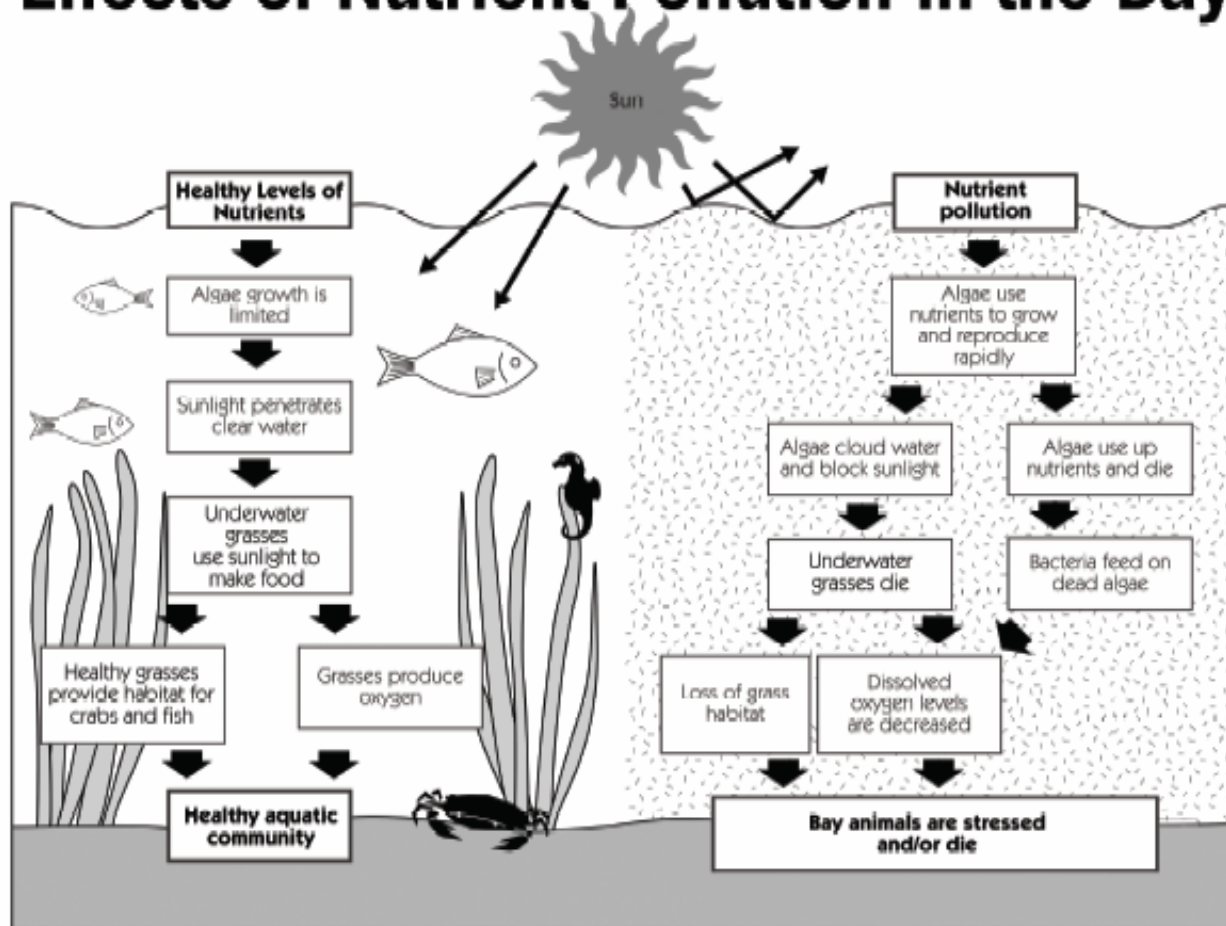
August 2005
Source: Chesapeake Bay Program



In August 2005, 41 percent of the volume of the Chesapeake Bay had too little oxygen to support a healthy ecosystem.

2005 resulted in some of the lowest dissolved oxygen levels ever recorded.

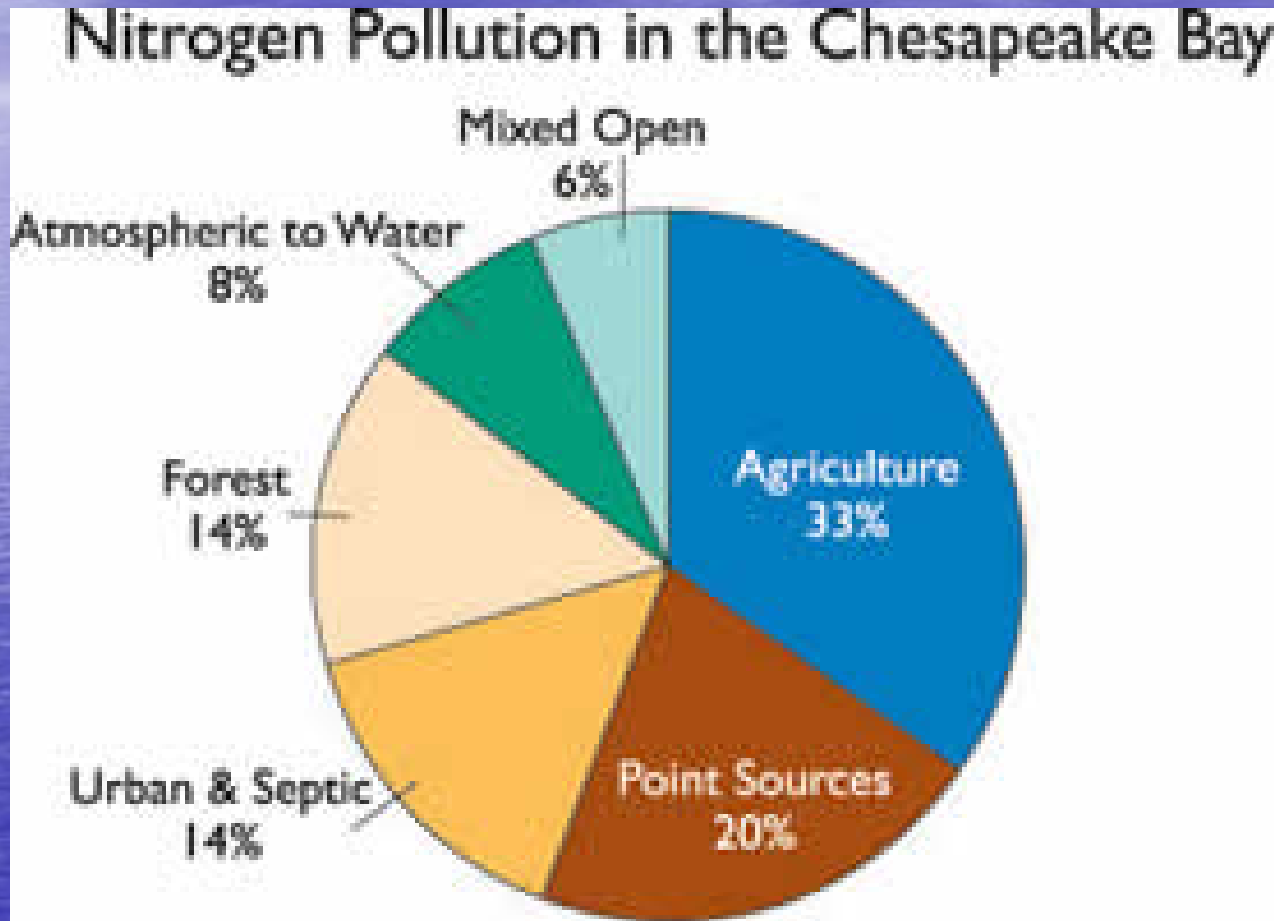
Effects of Nutrient Pollution in the Bay



CHESAPEAKE BAY FOUNDATION

Save the Bay

Where do the nutrients come from?



Chesapeake Bay Foundation

Land Use

Land Use

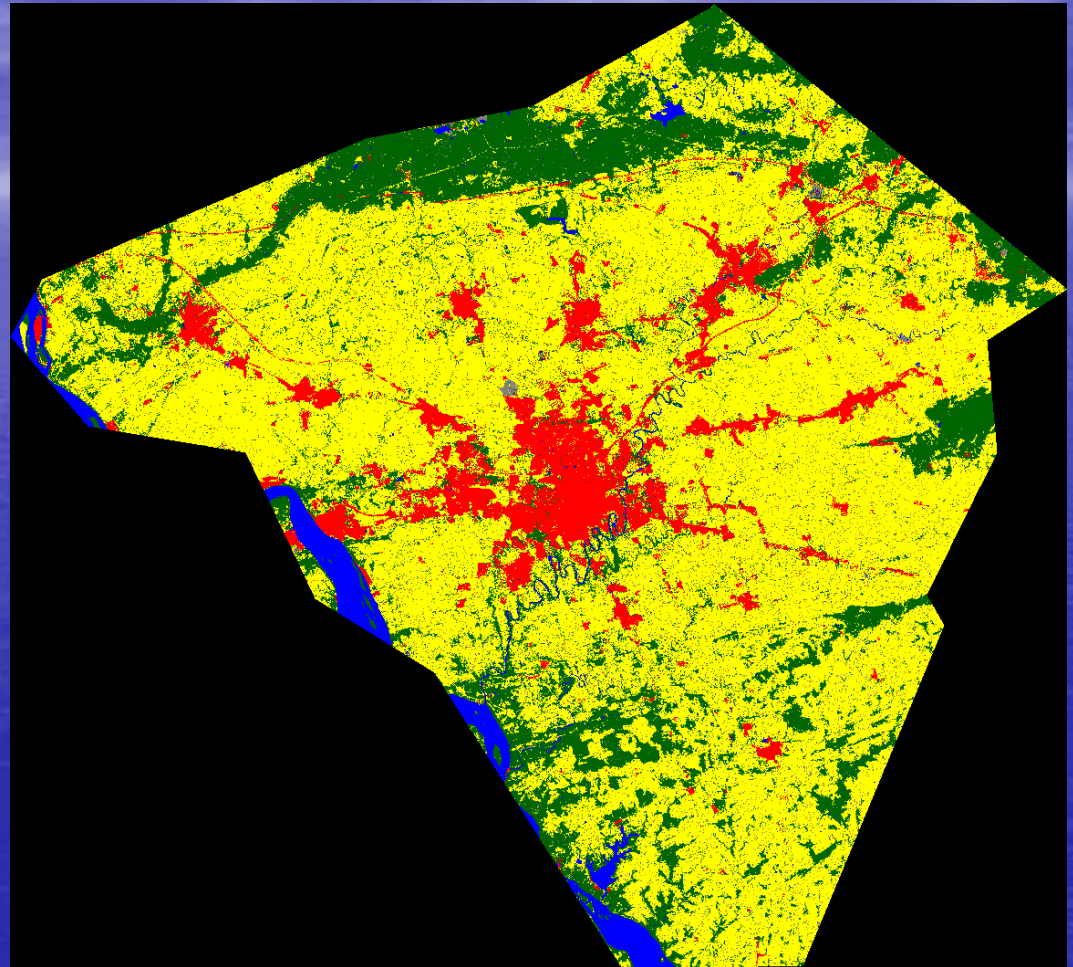
- Developed = 9.03%
- Ag = 64.95%
- Forest = 21.15%

Overall

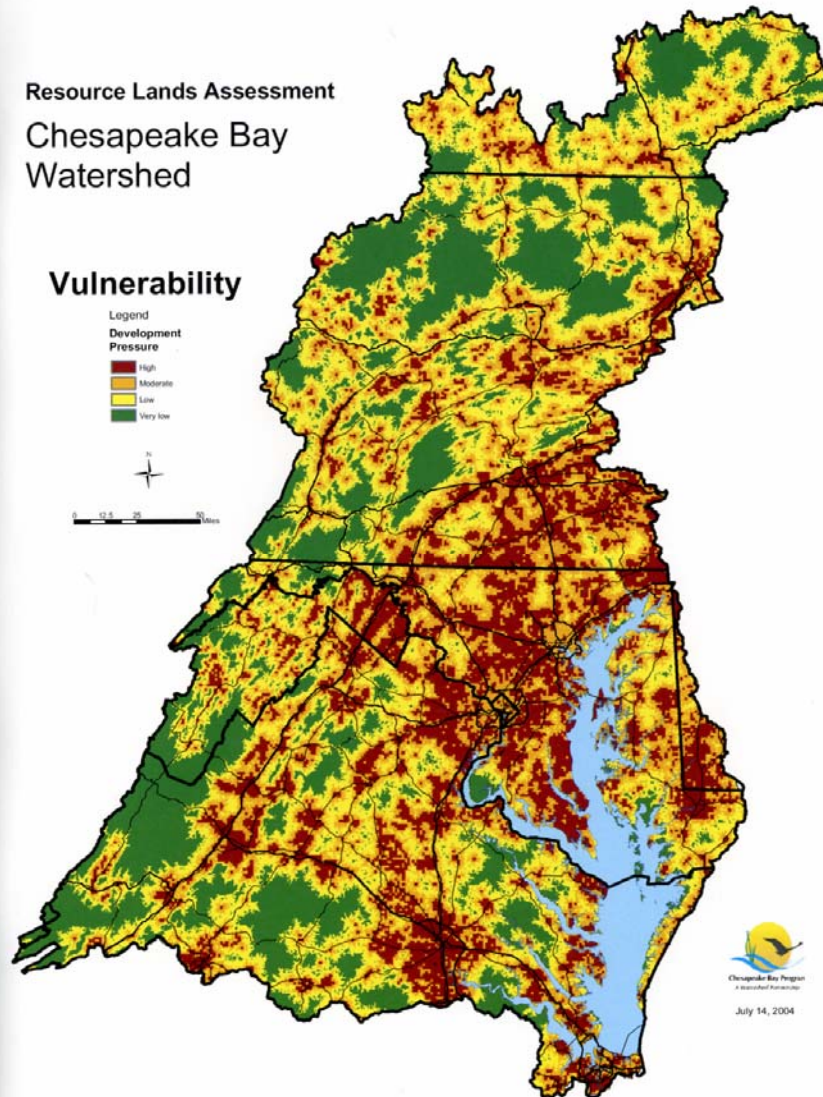
Imperviousness = 5.76%

- Pollutant Loading
- TN = 1,020,234lbs/yr
- TP = 366,341lbs/yr
- Sed = 624,619,300 lbs/yr

Source: PSU SHRP Model



Development Pressure



Reasons For Hope

- Despite the doubling of the human population within the Bay's watershed in the past 40 the health of the bay has remained steady.
- Improvements are being made on many farms in this county and within the Chesapeake Bay watershed
 - CREP
 - Conservation Plans
 - Education